



A Look at Learning Storyboard



School: District Team

District: Mt. Pleasant Elementary 2010-11 Year 2 Implementation

County: Santa Clara

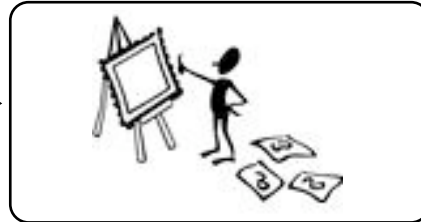
We Saw



1. Needs:

- More uniform use of materials and instructional strategies during ELD
- Increased use of high-yield SDAIE strategies
- Support for teachers in implementing differentiation
- Intervention reading materials that target student needs

We committed ourselves to pursue goals



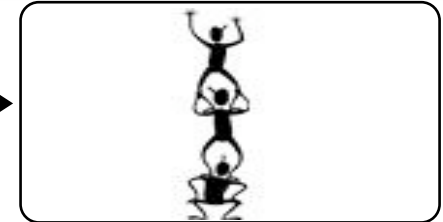
2. Outcomes

- Using *A.L.L.* coaching tools, build capacity of TOSA and intervention teachers
- TOSA and intervention teachers will use *A.L.L.* tools to coach teachers at their sites



3. Participant Identification

- 1 TOSA
- 4 Intervention Teachers
- 10 Classroom Teachers
- Director of EL



4. Focus and Approach

- **Focus Area II: Planning**
- Component A - Ensuring Full Access to Curriculum
- Component B - Building High Quality Instruction and Materials
- Support teachers through observations and feedback using the *A.L.L.* model

We acted



5. Action Steps:

- TOSA and intervention teachers met twice monthly to continue study of *A.L.L.*
- EL director or ELD TOSA observed teachers using *A.L.L.* forms
- *A.L.L.* coaching model was implemented with two teachers at each site

We achieved and reflected



6. Results:

- Participating teachers completed pre- and post- observation forms
- Two cycles completed
- Teachers met to discuss student data and collaborated to determine next steps



7. Lessons Learned/Next Steps:

- District will monitor schedules for the intervention teachers and ELD TOSA
- Fridays will be used for TOSA to coach other teachers on Focus Area II
- Continue to support this years' teachers and include new teachers in next year's cycle